



Preliminary Review of National Tank Cleanup Trends

**Merlyn L. Hough
Western Region Tanks Manager
Oregon Department of Environmental Quality**

**For ASTSWMO LUST Task Force
September 25, 2003**



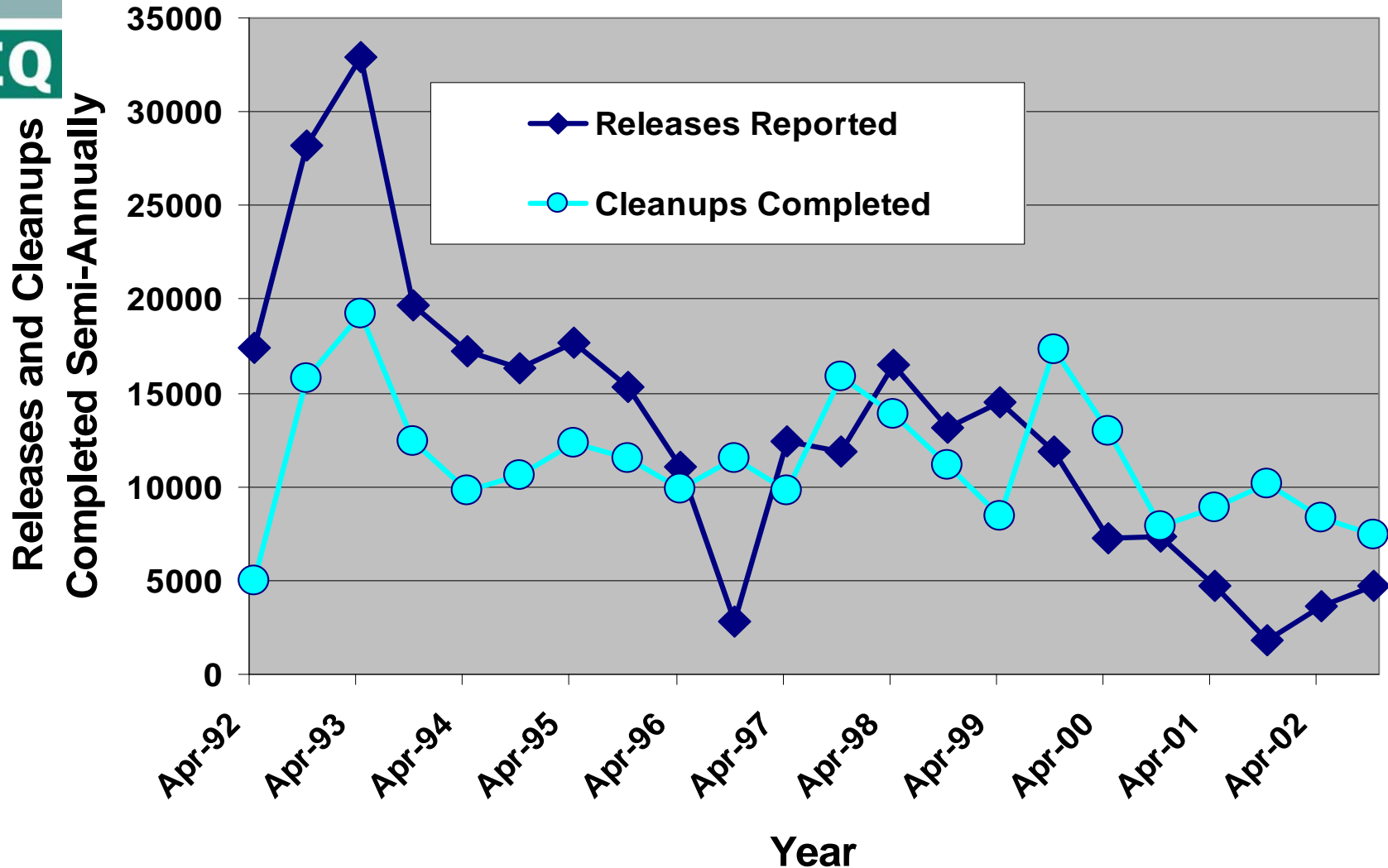
Expansion of earlier analysis presented at National UST/LUST Conference:

- q Review of national data on tank cleanups completed through 2002.
- q Evaluation of underlying factors contributing to cleanup rates.
- q Projections of current trends through 2003-2007.
- q Comparison of these trends to EPA 2003-2007 national tank cleanup goals.

Analysis of Tank Cleanup Trends



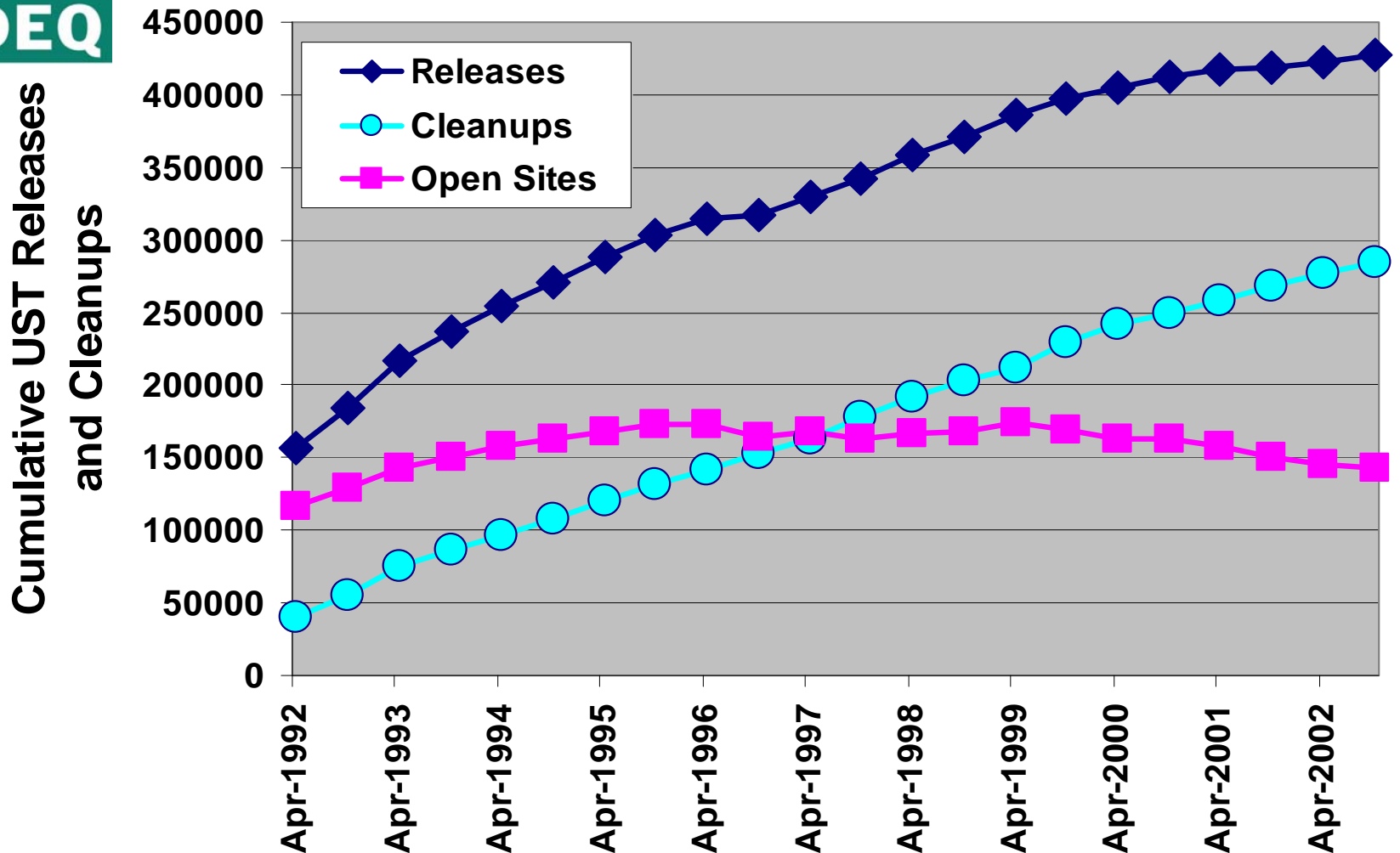
Purposes: 1) Evaluate the underlying trends of cleanups completed; and 2) Forecast future years.



Analysis of Tank Cleanup Trends



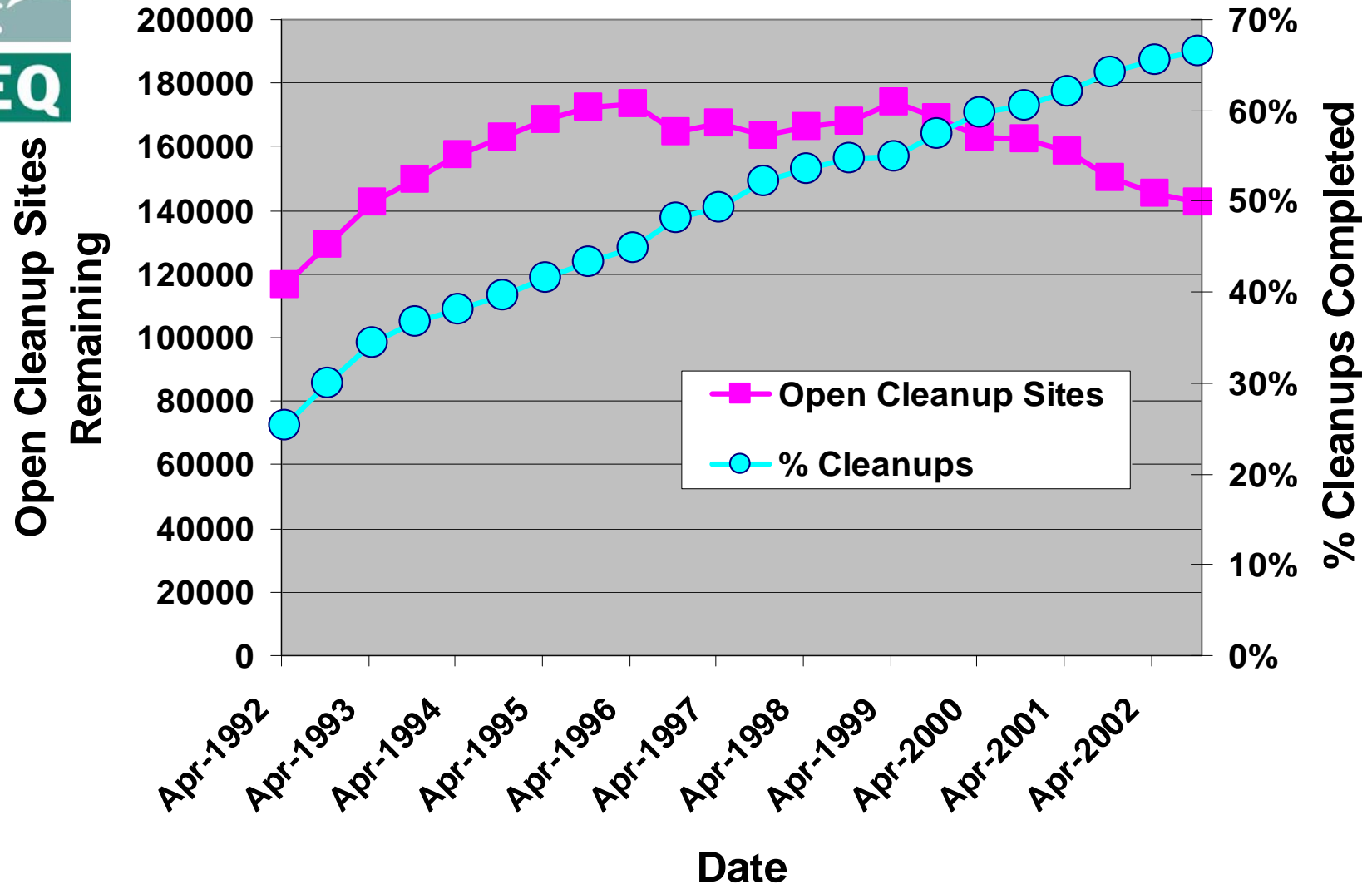
Historical data presented as cumulative totals:



Analysis of Tank Cleanup Trends



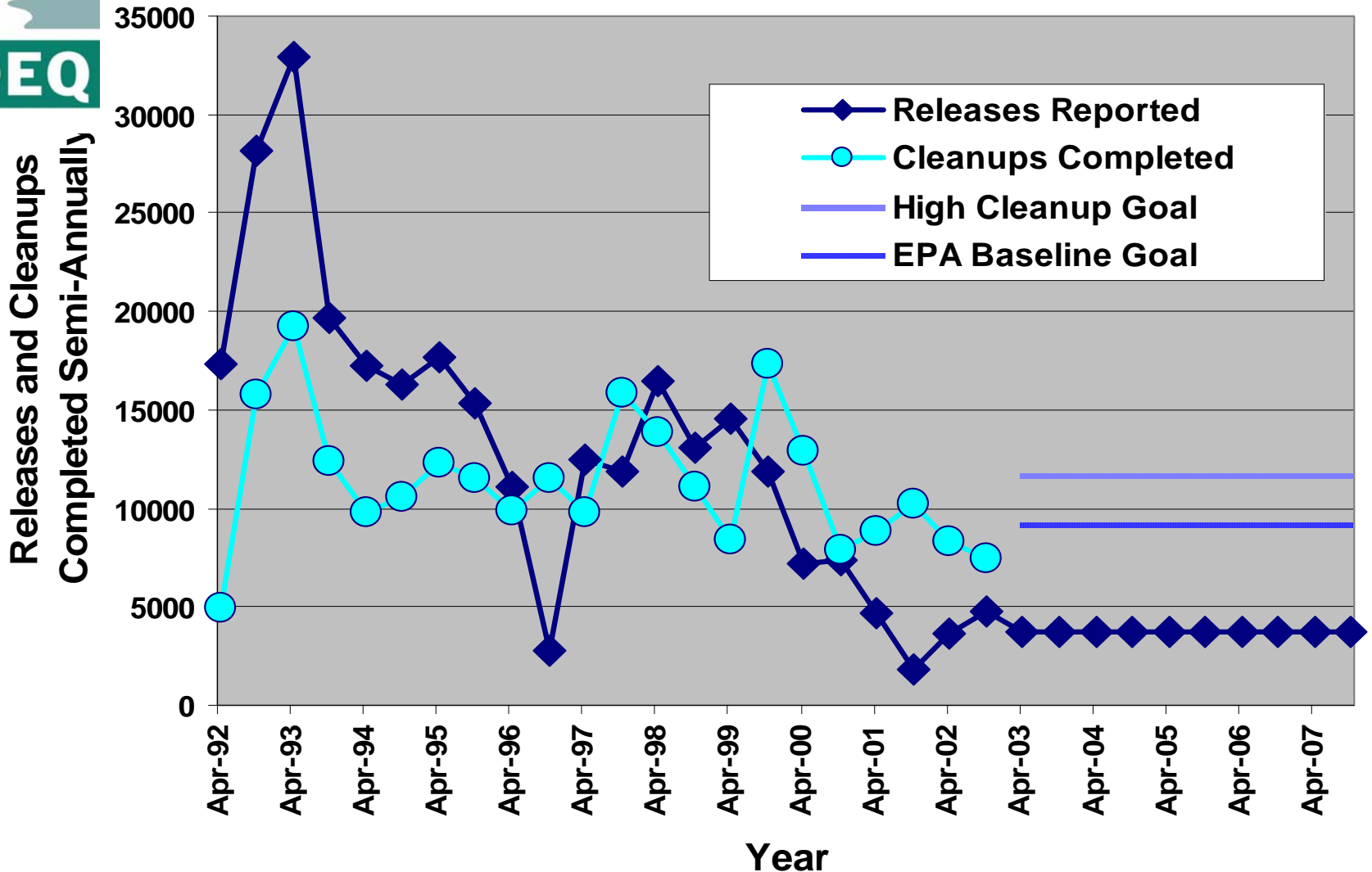
The national average is approaching
70% cleanups completed:



Analysis of Tank Cleanup Trends



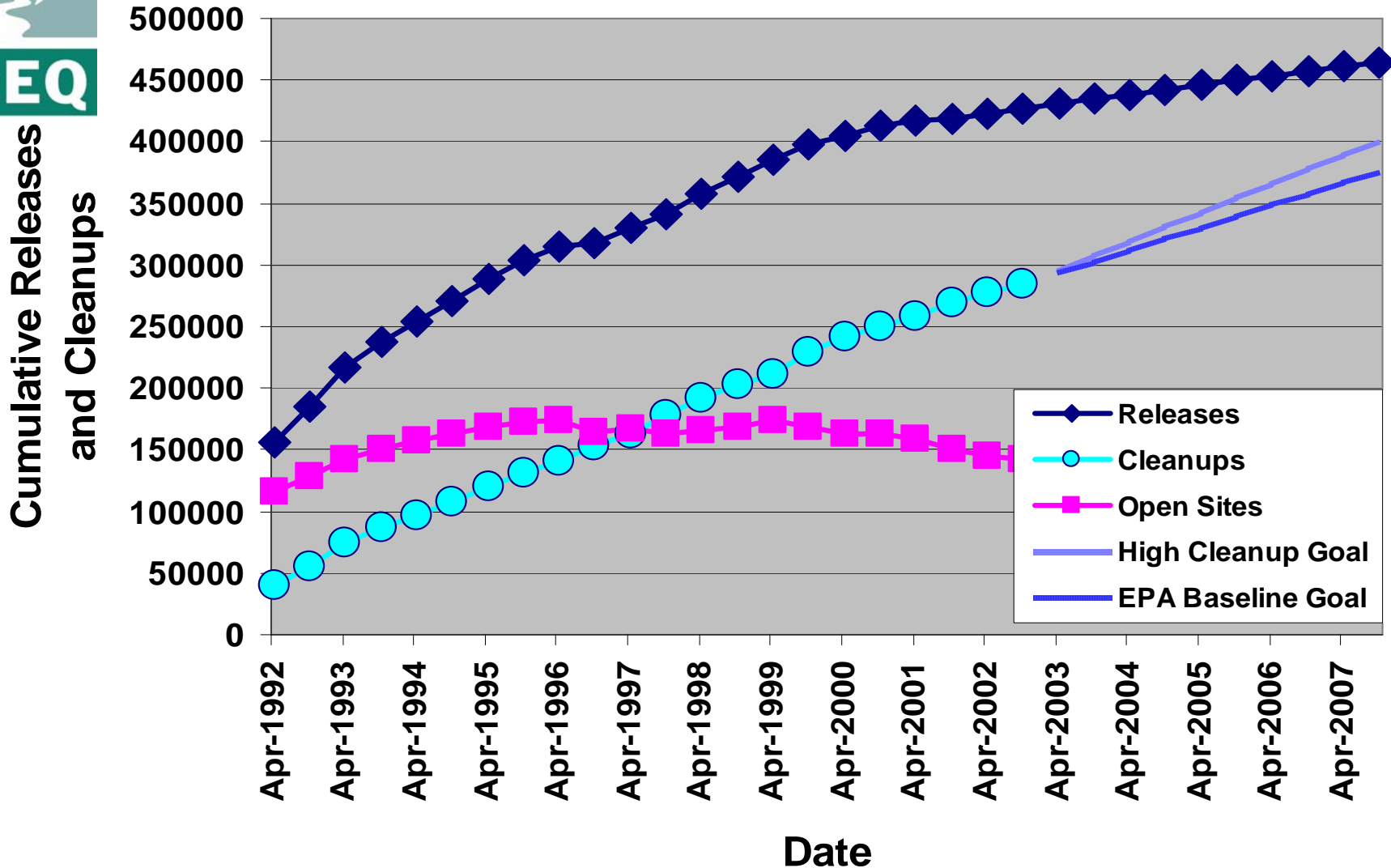
The EPA Office of Underground Storage Tanks has proposed baseline and high cleanup goals:



Analysis of Tank Cleanup Trends



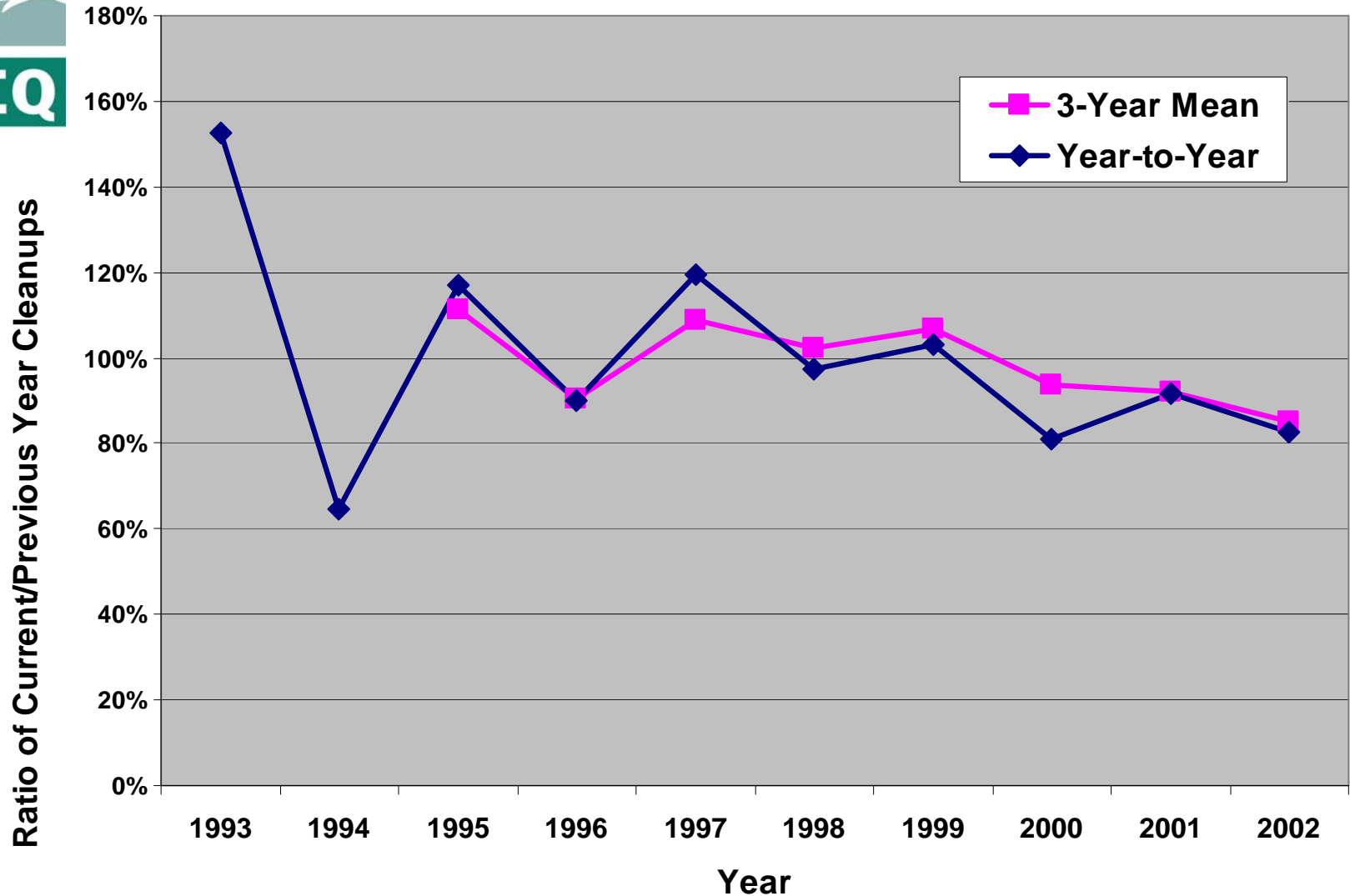
Presented as cumulative totals, the EPA baseline and high cleanup goals would look like this:



Analysis of Tank Cleanup Trends



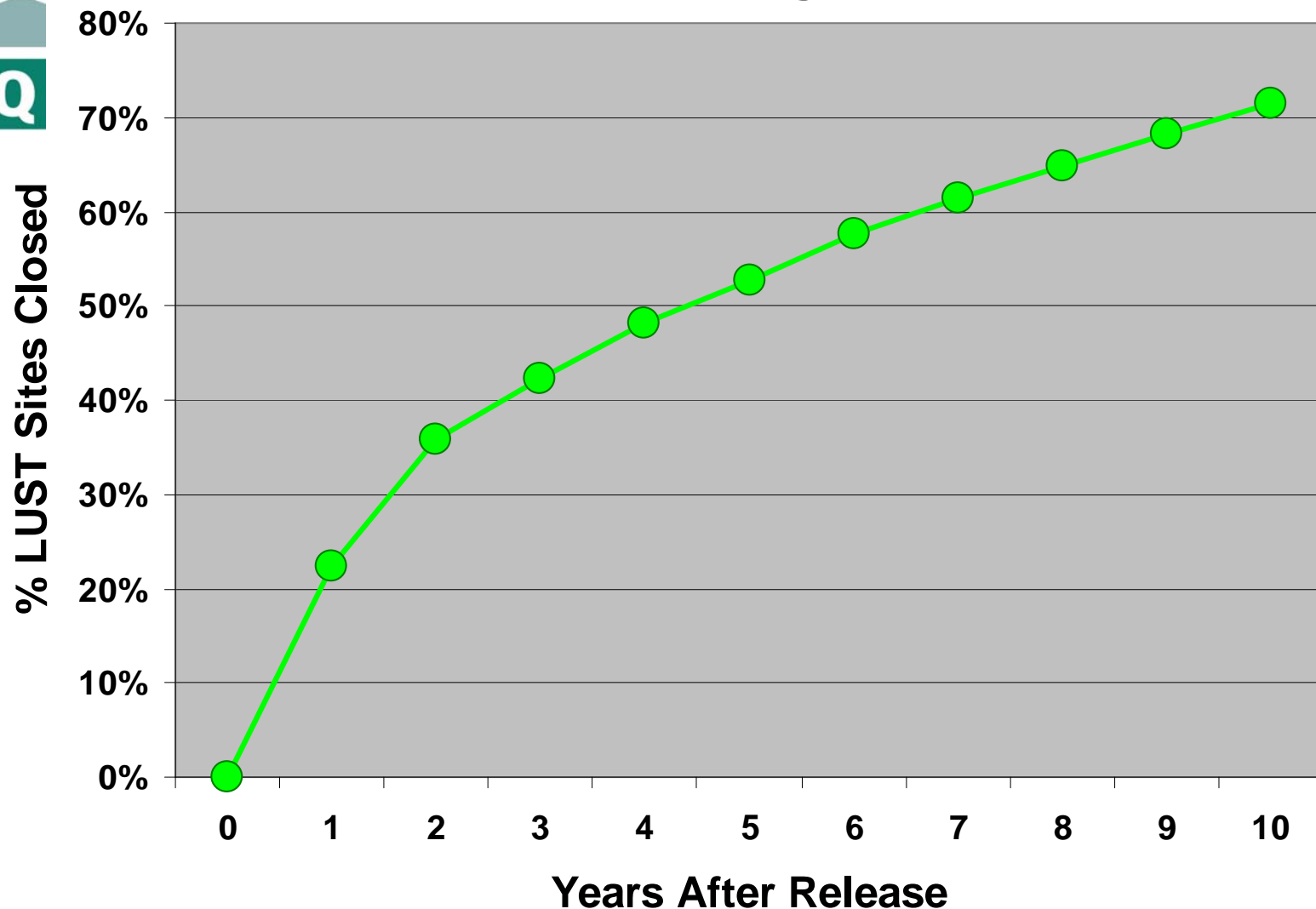
The ratio of cleanups-completed compared to the previous year has declined over the past decade:



Analysis of Tank Cleanup Trends



The key underlying factor for the cleanups-completed rate is the average time-to-closure:





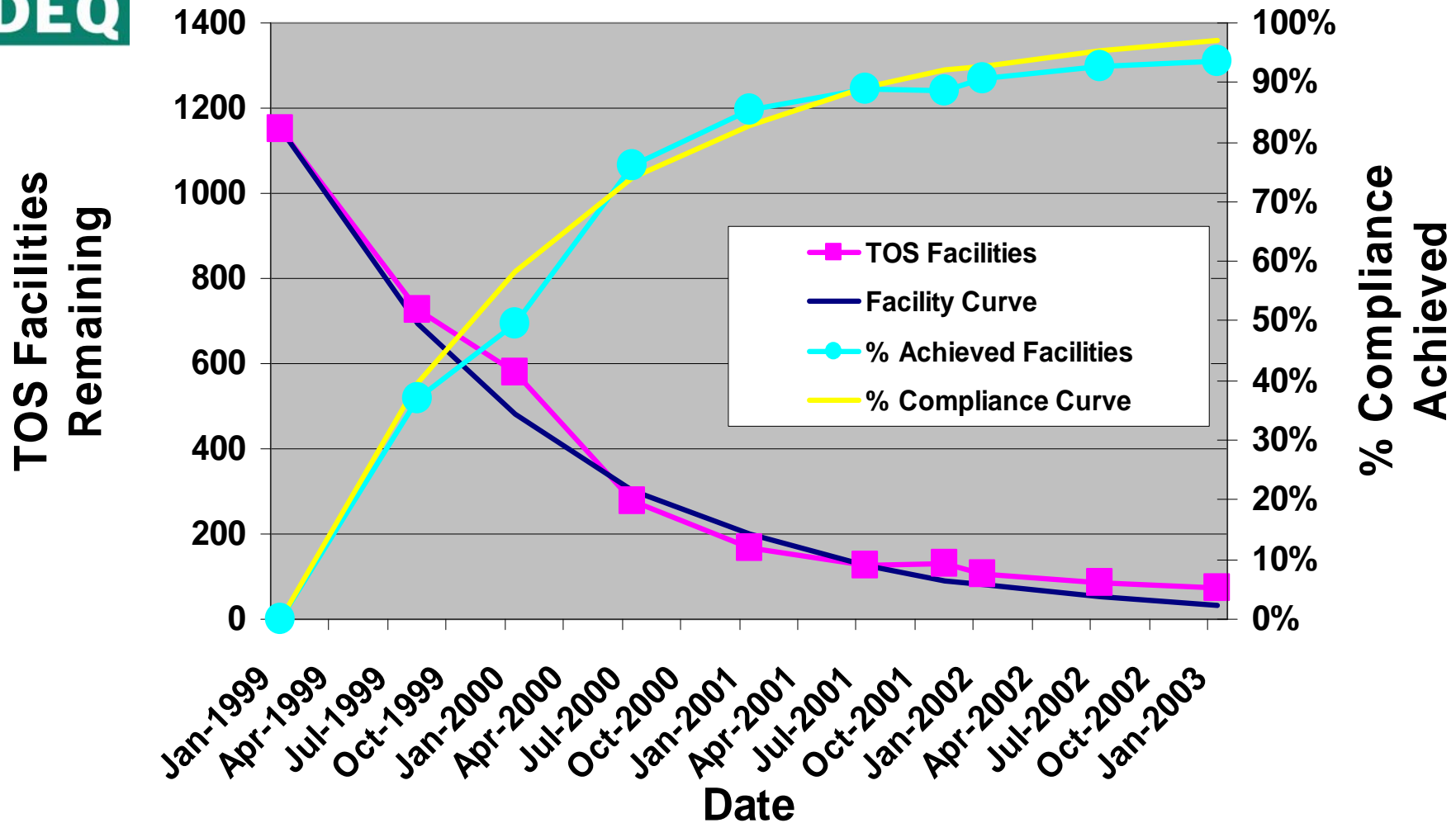
Many factors influence the overall time-to-closure rate:

- q Major factors involve the responsible parties: Known? Willing? Able?
- q Other major factors include the severity of the contamination, the sensitivity of the nearby receptors, and the complexity of the cleanup, including groundwater impacts and soil types.

Analysis of Tank Cleanup Trends



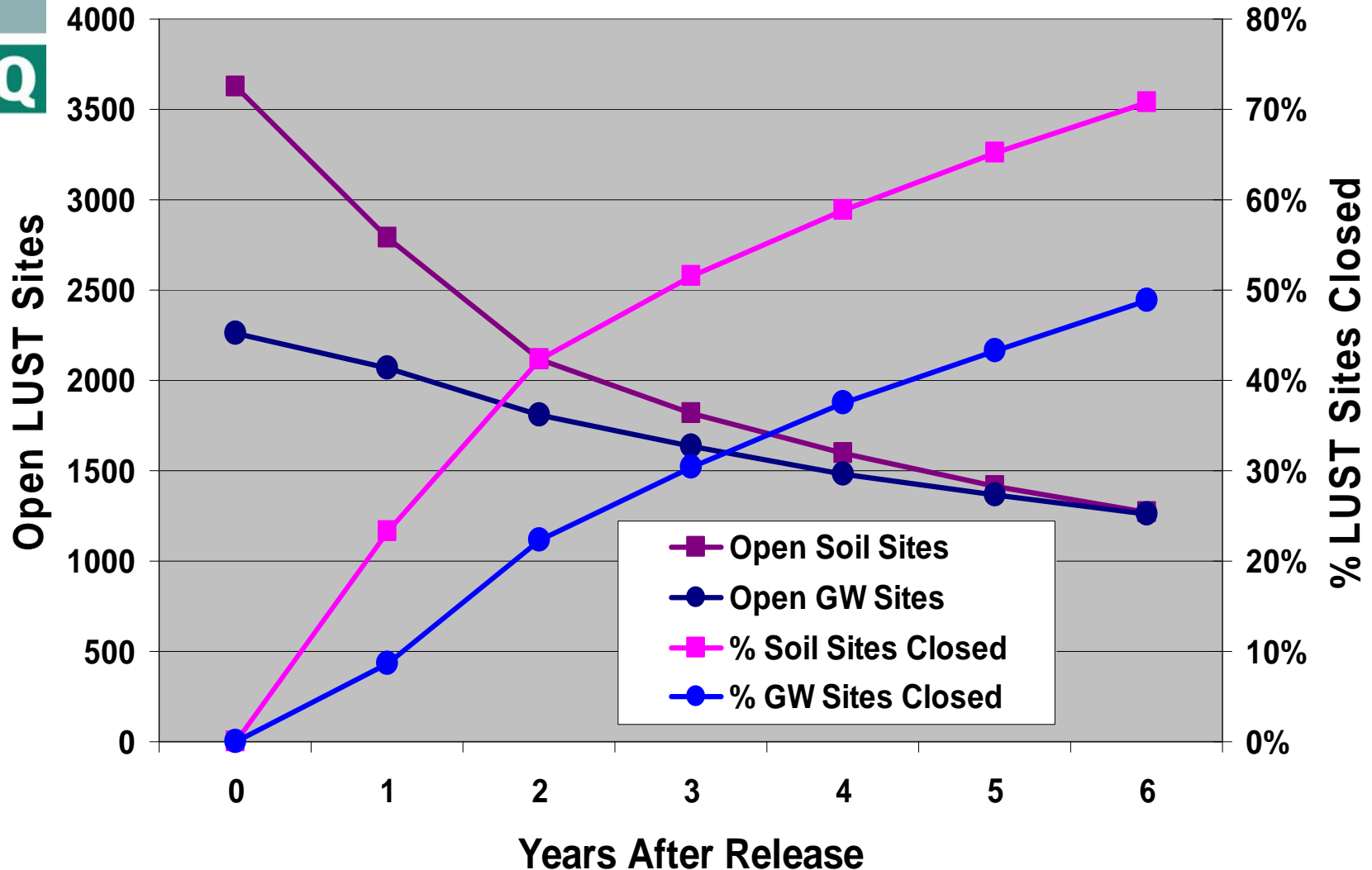
Decommissioning of temporarily-out-of-service (TOS) tanks in Oregon illustrates the increasing RP difficulties in the final stages:



Analysis of Tank Cleanup Trends



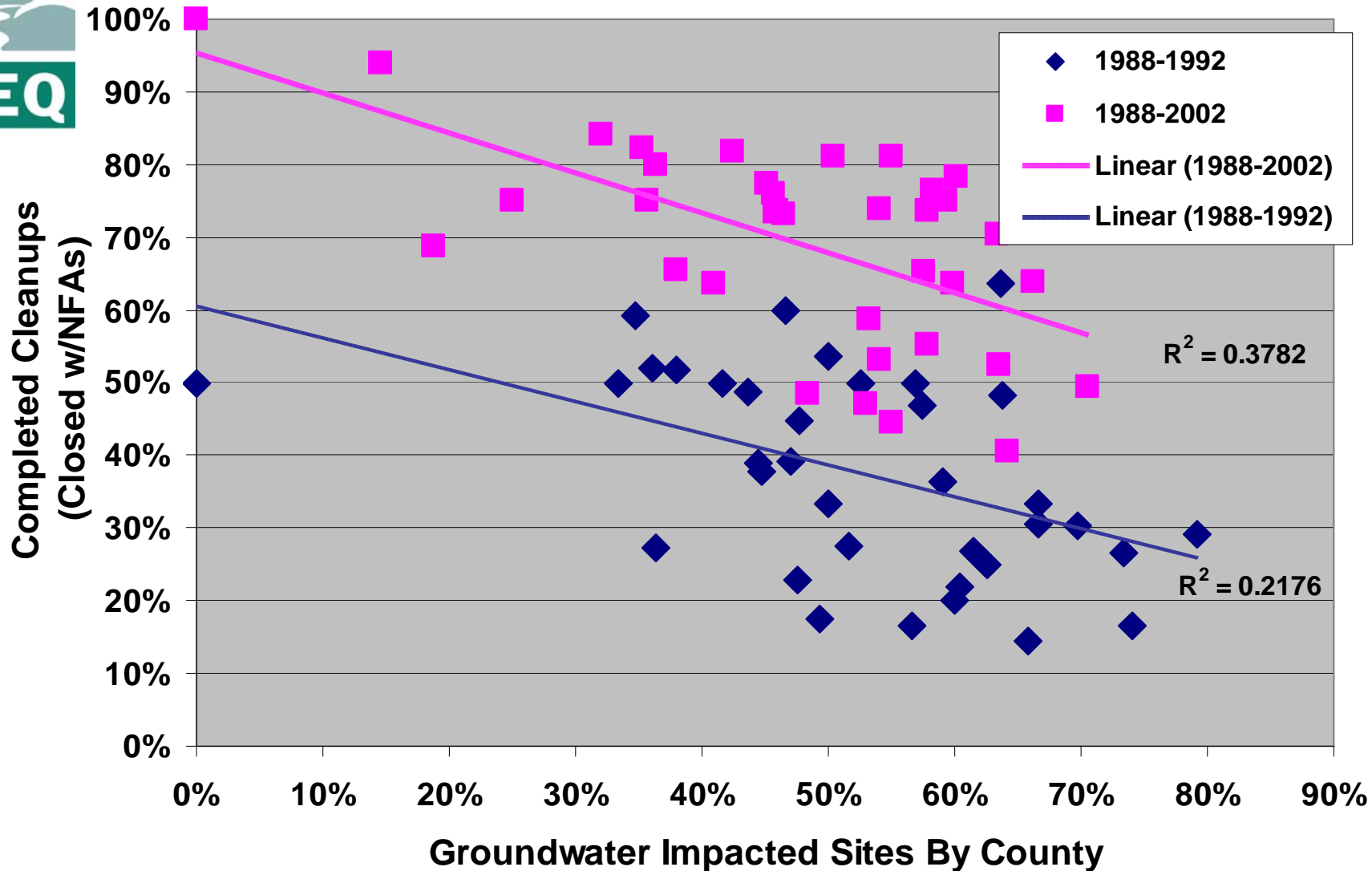
Oregon time-to-closure rates on 1990-2002 releases illustrate the effects of groundwater impacts:



Analysis of Tank Cleanup Trends



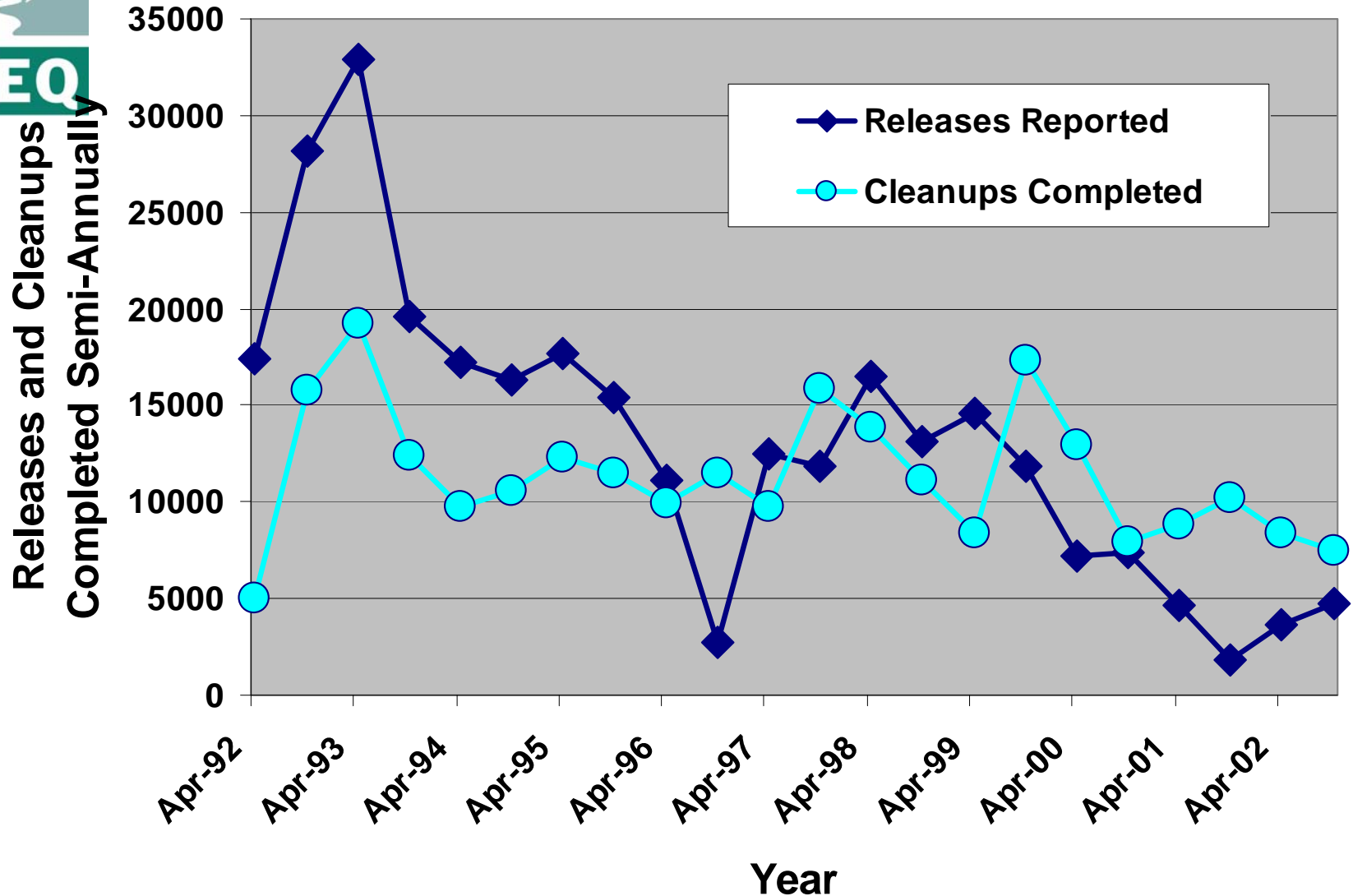
Groundwater impacts are a major factor affecting the cleanups-completed rate in the 36 Oregon counties:



Analysis of Tank Cleanup Trends



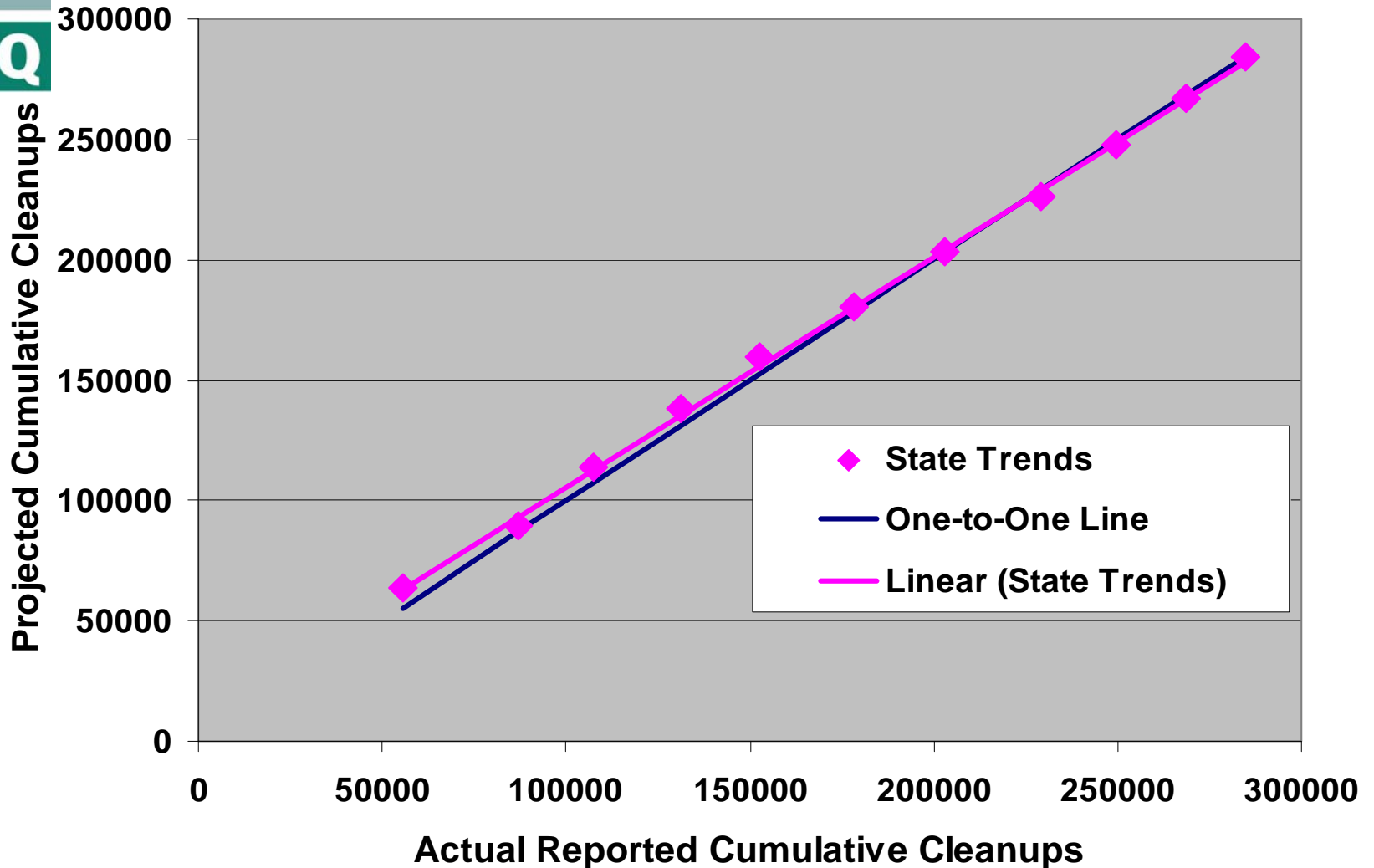
National time-to-closure rates were applied to the UST releases reported during 1992-2002:



Analysis of Tank Cleanup Trends



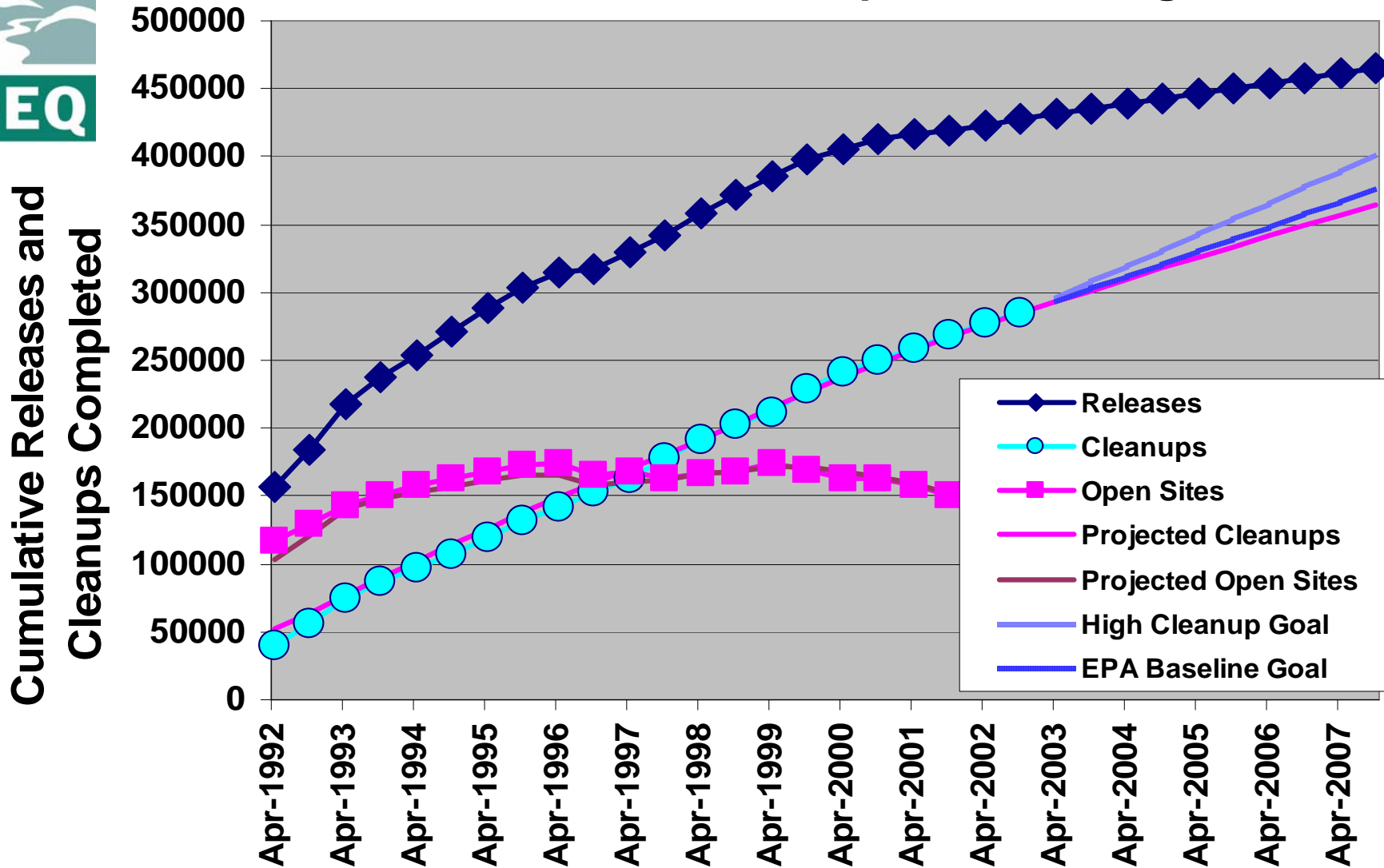
The projected number of cleanups-completed agreed very closely with reported numbers:



Analysis of Tank Cleanup Trends



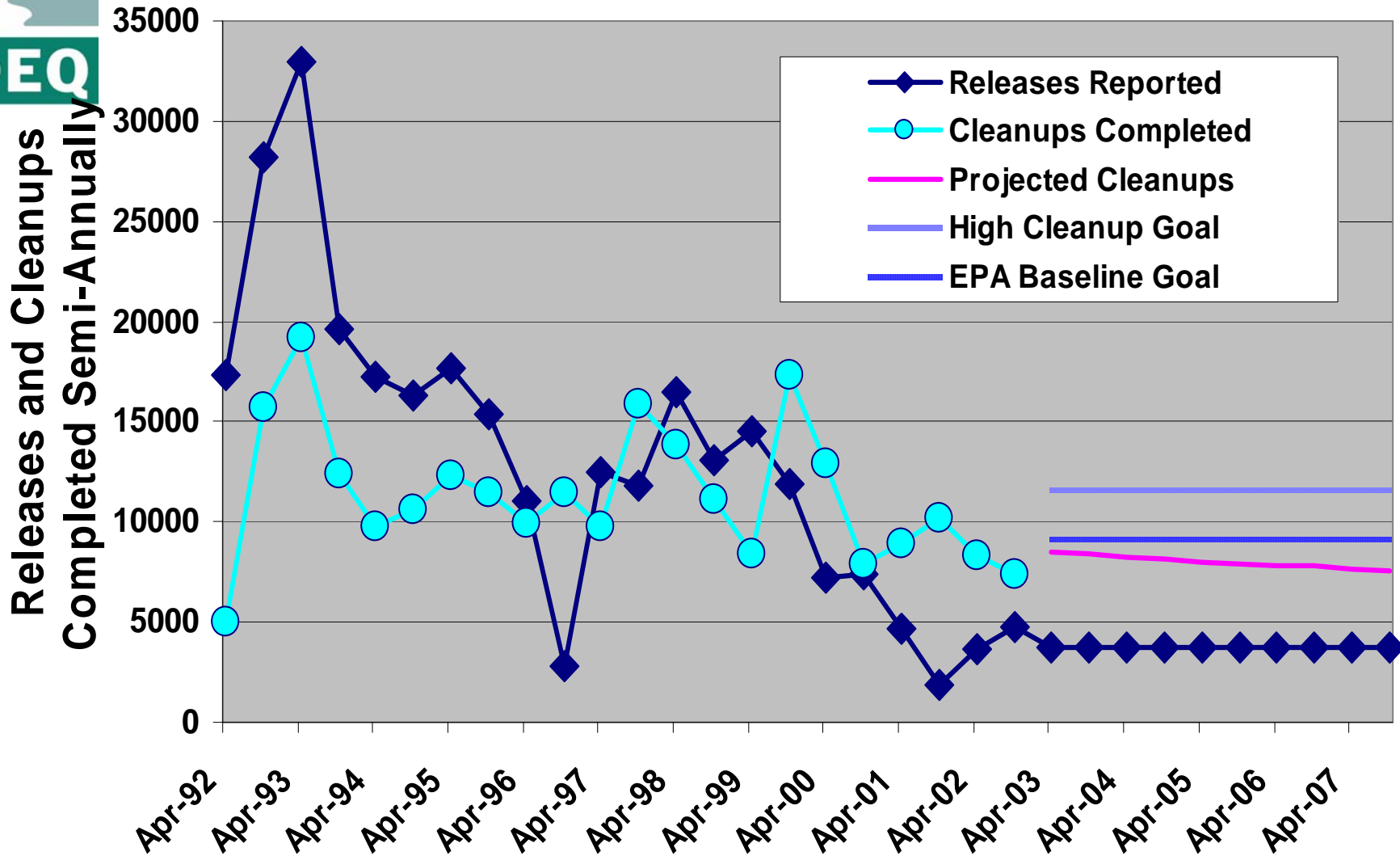
Using time-to-closure data, cleanups-completed were forecasted and compared to EPA goals:



Analysis of Tank Cleanup Trends



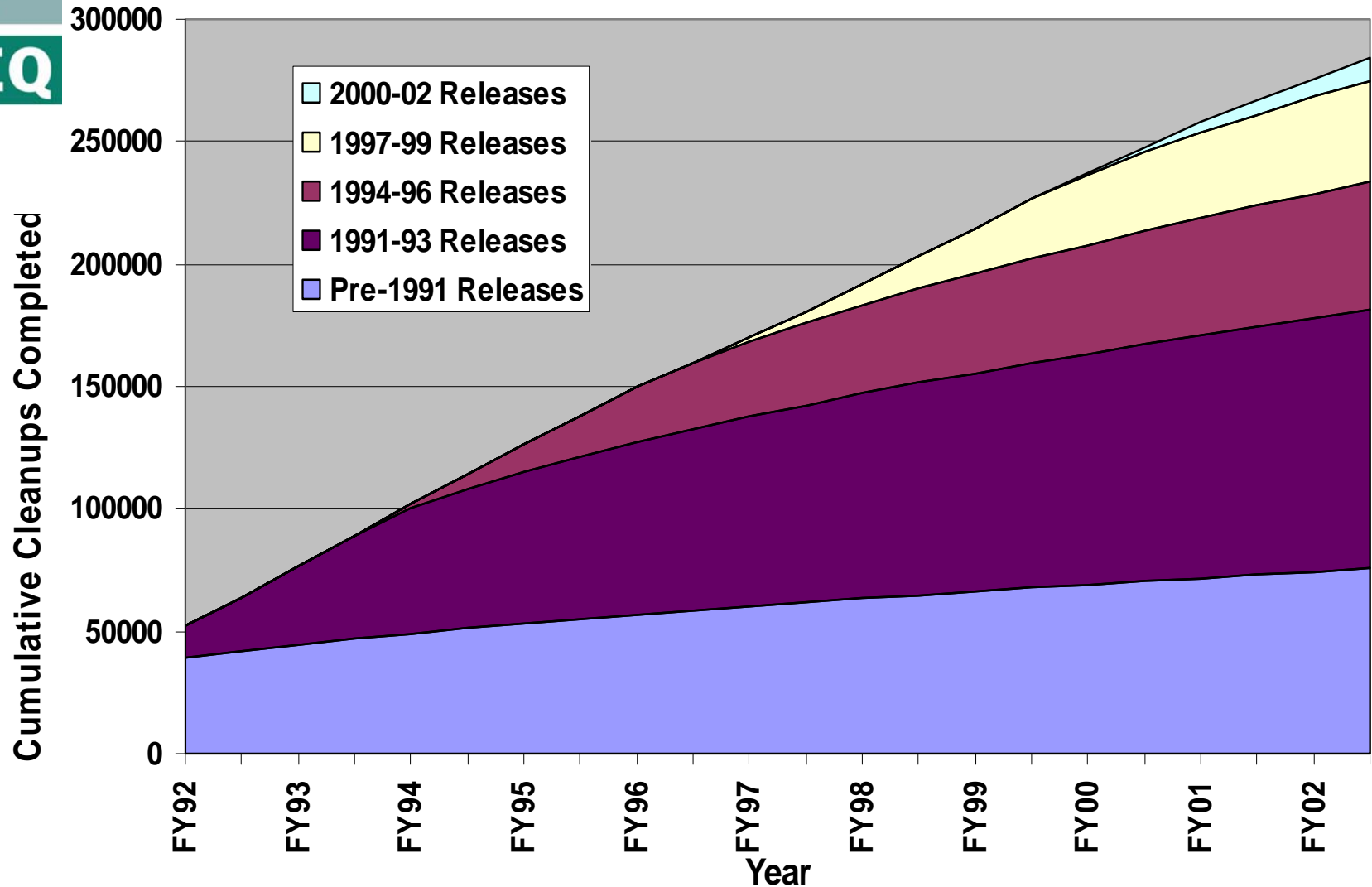
There is an increasing gap between the current cleanups-completed trends and the EPA goals:



Analysis of Tank Cleanup Trends



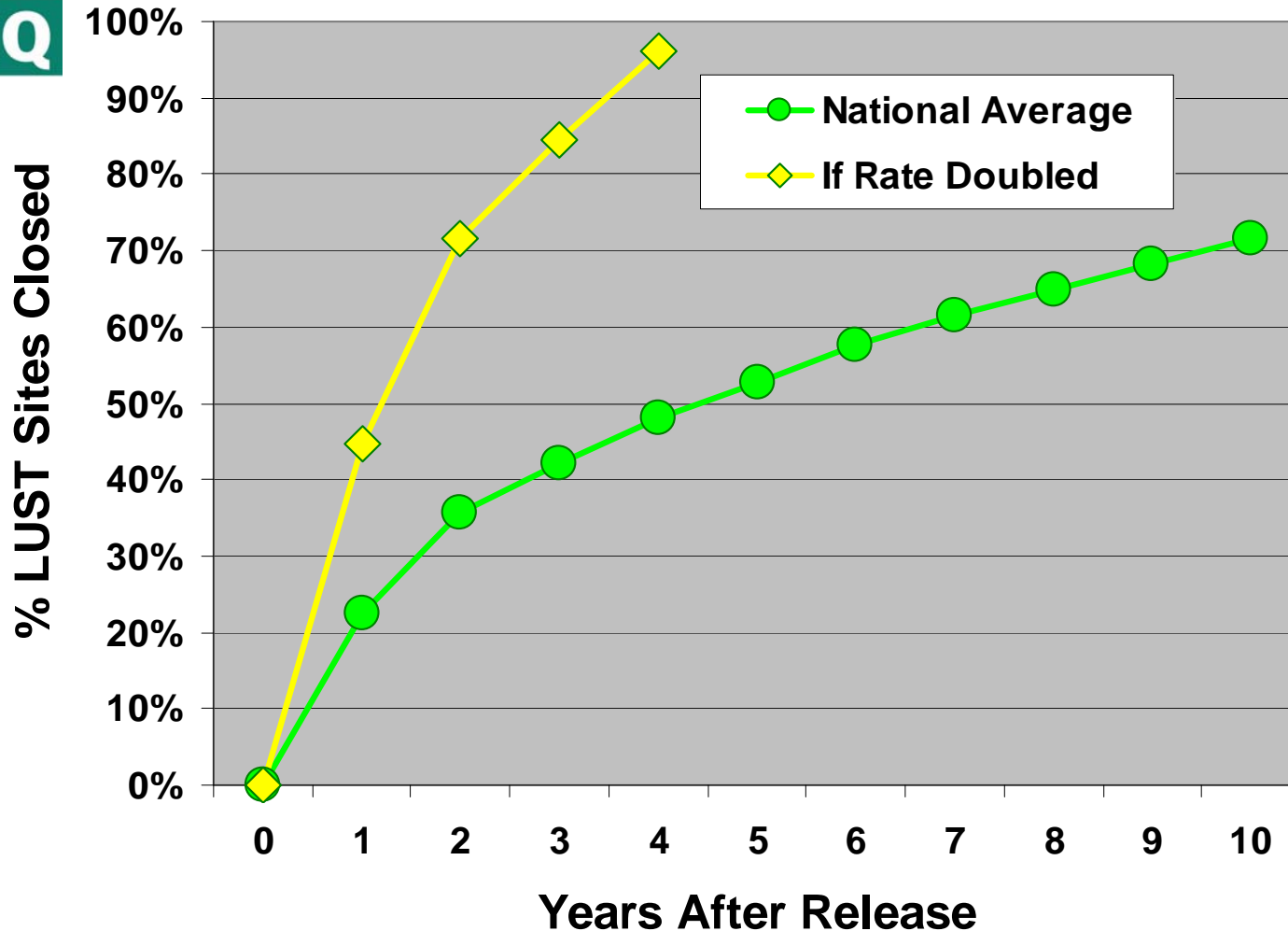
Releases in recent years are a very small part of the overall cleanups-completed picture:



Analysis of Tank Cleanup Trends



To meet even the EPA baseline goal would require a doubling of the rate of cleanups completed:



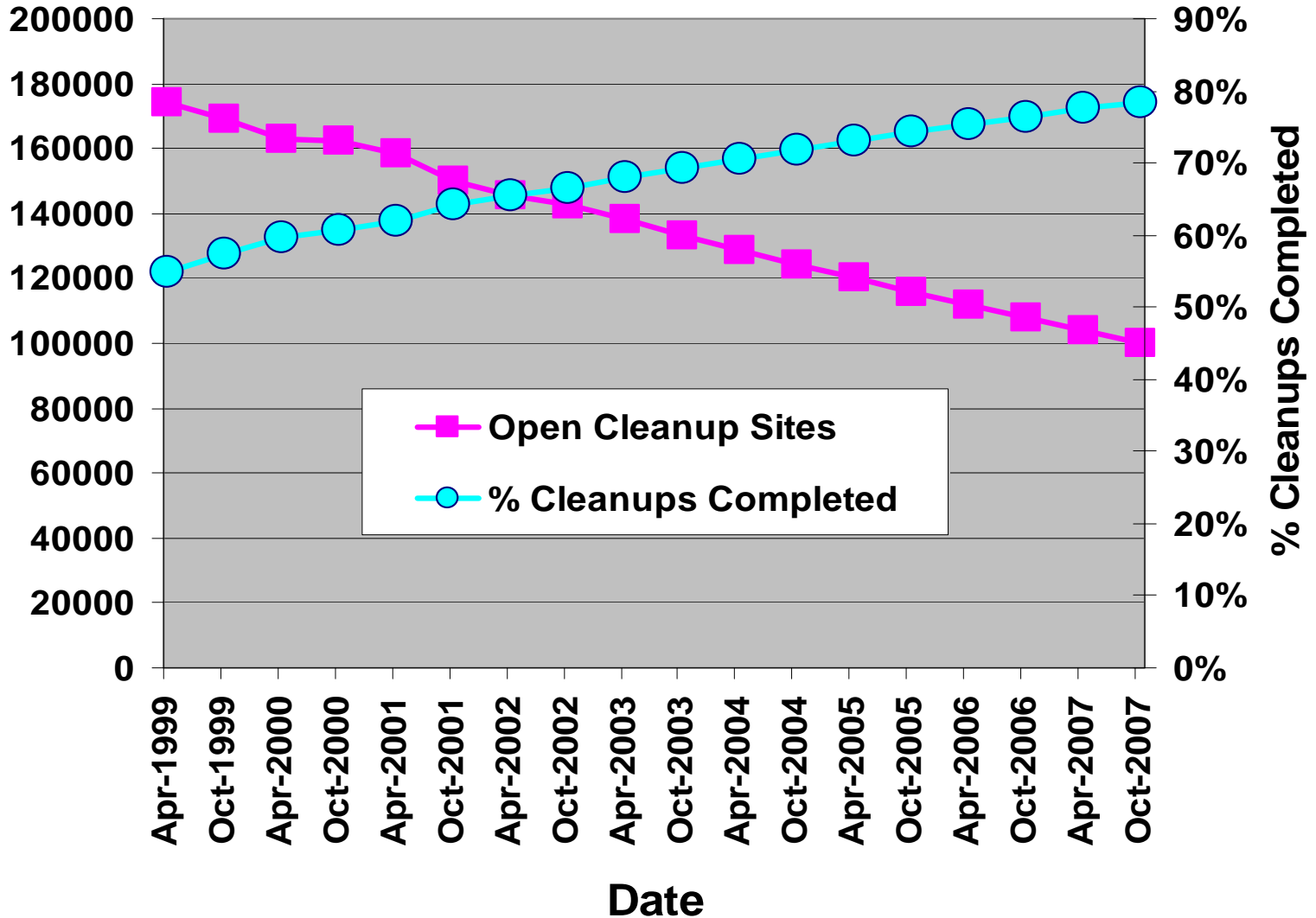
Analysis of Tank Cleanup Trends



DEQ

Open Cleanup Sites
Remaining

These projections of % cleanups-completed and # of open sites are based on current trends:





Conclusions from preliminary review:

- q The EPA cleanups-completed goals are not consistent with historical time-to-closure rates and recently reduced release rates.
- q If the reported releases further decline (due to the continued success of the UST upgrade and compliance programs) the EPA cleanups-completed goals will be even more difficult to achieve.
- q More appropriate goals would be to increase the cleanups-completed percentage and reduce the number of open sites consistent with the current success trends.



Preliminary Review of National Tank Cleanup Trends

Merlyn L. Hough

Western Region Tanks Manager

Oregon Department of Environmental Quality

1102 Lincoln Street, Eugene OR 97401

Telephone: (541) 686-7838 Extension 227

E-mail: hough.merlyn@deq.state.or.us